



T1D
Exchange

**T1DX-QI BPA-TECH (Best Practice
Advisories for Tech Equity)
September 26, 2024 Meeting**

Agenda

- Welcome
- Project Aims
- Timeline
- Process for BPA Development and Timeline- JHU
- Participating centers share current process for BPA integration
- Comments/Feedback

Project Aims

- Aim 1: To develop and implement an EHR-based BPA using stakeholder feedback to standardize the approach for prescribing and documenting advanced diabetes technologies (ADT) (CGM, insulin pump, AID) among adult and pediatric PwT1D.
- Aim 2: To determine the effectiveness of an EMR-based BPA in reducing racial inequities in ADT.
- Aim 3: To explore the reasons identified for providers' decision to not prescribe ADT and whether they were PwT1D or provider led decisions, and the association between the reason provided and the PwT1D's race/ethnicity.

Timeline	Expectations
September 2024	<ul style="list-style-type: none">• Attend monthly calls• Process for BPA Development and Timeline- JHU• Teams share current process for BPA integration
October 2024	<ul style="list-style-type: none">• Attend monthly coaching calls• Focus Groups Updates• PWT1D and Caregiver Survey
November 2024	<ul style="list-style-type: none">• Attend monthly coaching calls• PWT1D and Caregiver Survey Responses/Updates• Patient Interviews

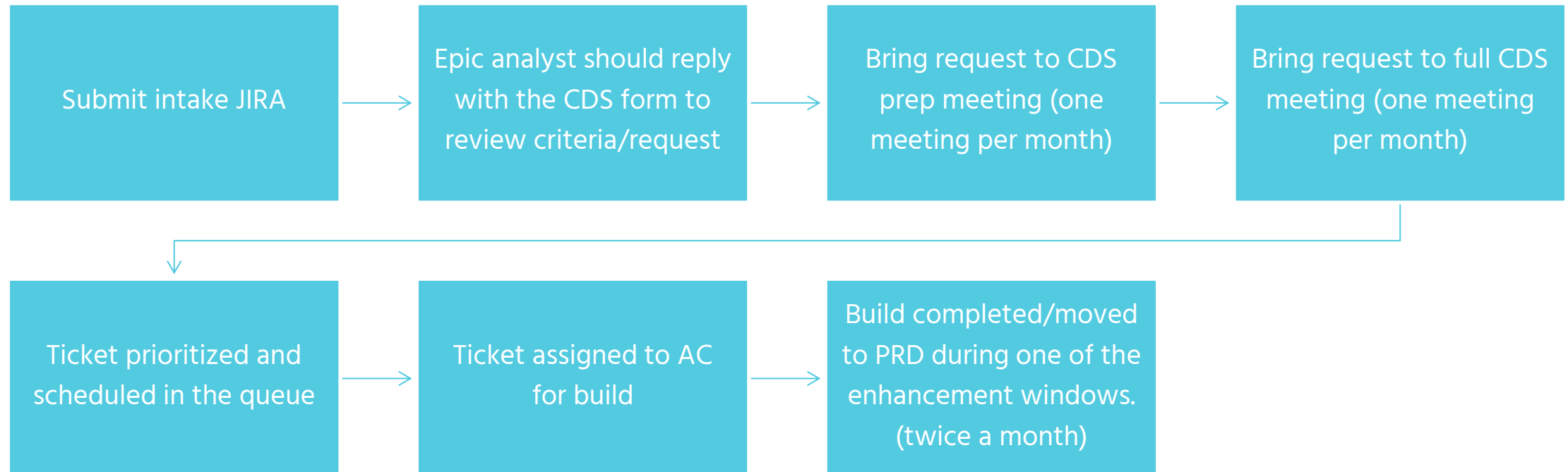
Study Timeline

Milestones	Apr-24	Jul-24	Oct-24	Jan-25	Apr-25	Jul-25	Oct-25	Jan-26	Apr-26	Jul-26	Oct-26	Jan-27
Start-up	X											
Aim 1												
Qualitative Study		X	X									
BPA develop/impl.			X	X	X							
Publication				X								
Aim 2												
BPA deployed					X	X	X	X	X			
Data collection						X	X	X	X	X		
Data analysis								X	X	X	X	
Aim 3												
Data analysis										X	X	X
Publications											X	X



Highlights and Lessons Learned from Johns Hopkins University

Steps to Develop a BPA in EPIC at Johns Hopkins



BPA Eligibility Criteria from the Study Protocol

Eligibility Criteria

Patient eligibility criteria for inclusion in the analysis are:

- Age \geq 2 years
- A T1D diagnosis for at least 6 months during the baseline period
- Receiving care at one of the six intervention centers or a matched control center in the T1DX-QI
- Patients with at least one clinical encounter (in-person or video visit) in *both* the baseline and follow-up periods

Exclusion criteria include:

- PwT1D already using an AID at baseline
- Pregnant patients

Criteria for BPAs

BPA	Criterion	Response	Data Element(s)	Data Source	Lookback Period	Comment
#1, #2	Age	≥ 2 years	Age	Demographics	At encounter	Upper age limit?
#1, #2	Type 1 Diabetes for at least 6 months	=Yes	ICD-10 codes (E10.X), Type of Diabetes (intake form)	Problem list, PMH, Visit diagnosis, Diabetes Intake Form	6 months	Inconsistent use of intake form
#1	Using CGM	=No	Glucose Monitoring Method= CGM (Flowsheet Row 21021070)	Diabetes Intake Form	TBD	Inconsistent use of intake form
#2	Using AID	=No	Insulin Delivery Method = Not Blank (Flowsheet Row 21021070)	Diabetes Intake Form	TBD	Inconsistent use of intake form

Exclusions: ICD-10 code for pregnancy

Restrictions: Endocrine Departments (outpatient); MD/APP provider; Scheduled Encounters only



Diabetes Intake Form – Flowsheet Rows

Diagnosis Info

Type of Diabetes



Type 1 Diabetes

Gestational Diabetes

Post total pancreatectomy diabetes

Type 2 Diabetes

Maturity onset diabetes of the young (MODY)

other diabetes type:

[Type 1 Diabetes](#) << taken 3 months ago

Glucose Data

Glucose Monitoring Method



None

Glucose Meter

CGM

[CGM](#) taken today

Continuous Glucose Monitor Device



Dexcom G6

Dexcom G7

Guardian

Freestyle Libre 2

Freestyle Libre 3

Other

[Dexcom G6](#) << taken 3 months ago

Insulin Delivery Method



Omnipod

Tandem

Medtronic

iLet

Other

[Medtronic](#) << taken 3 months ago

Omnipod Program



Omnipod Classic

Omnipod Dash

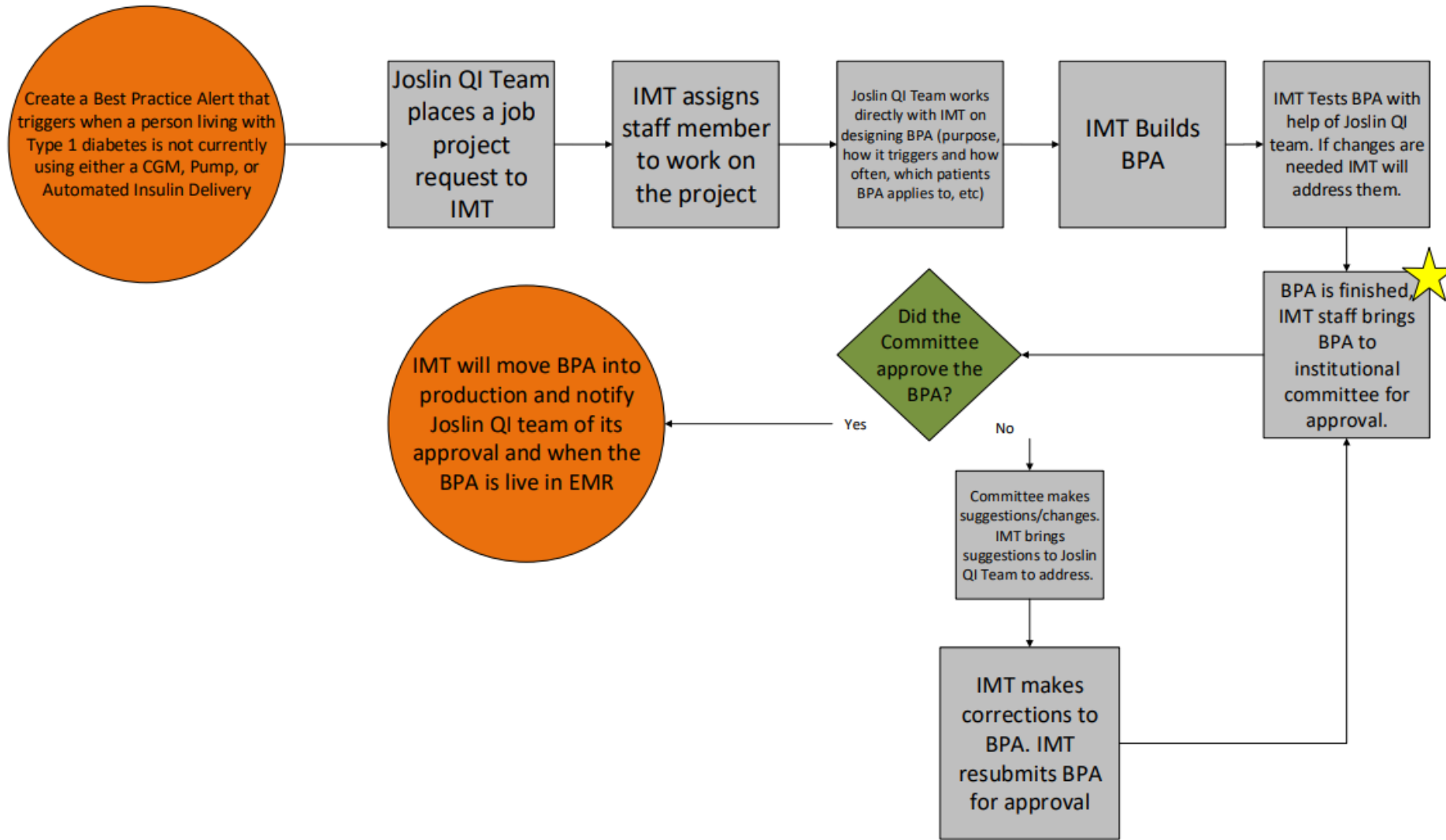
Omnipod 5



Participating Centers Current BPA Integration Processes



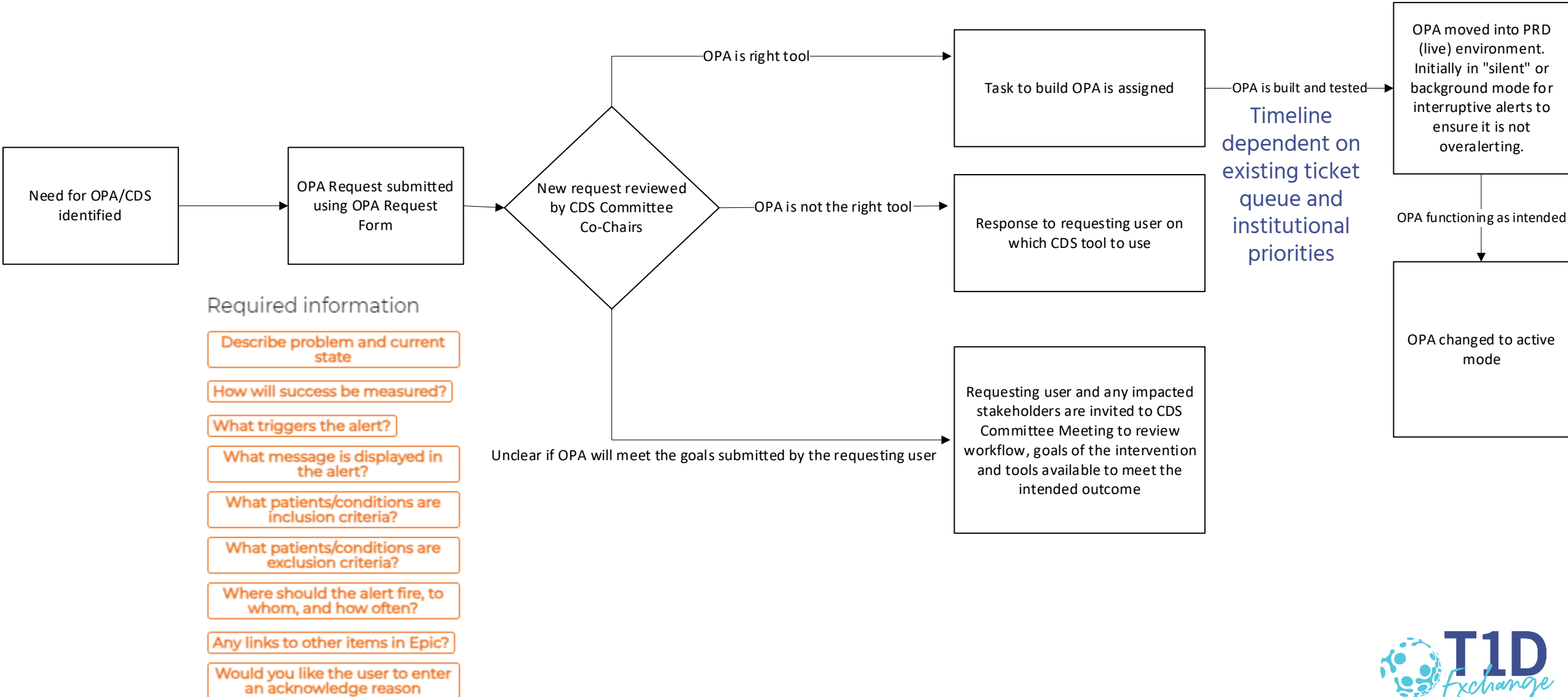
SUNY Upstate (Joslin Center) Adult





Seattle Children's Hospital

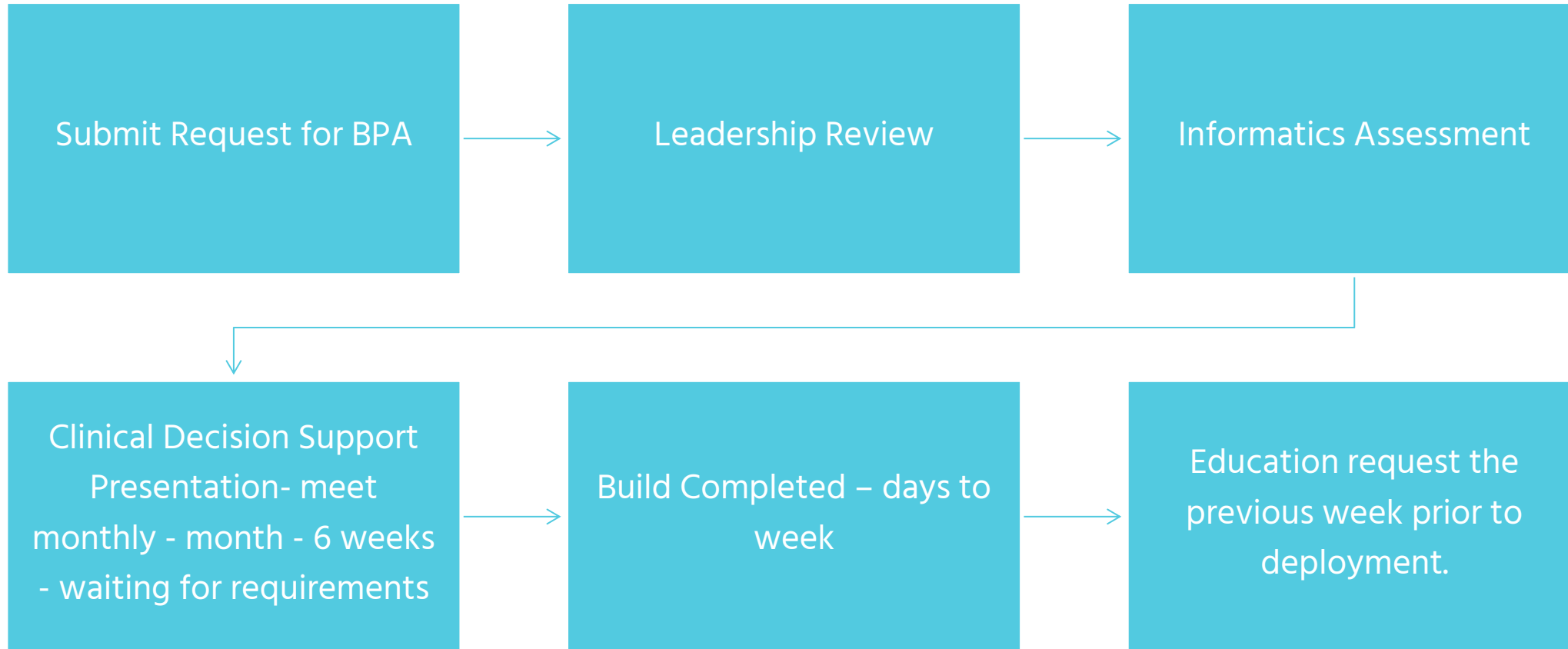
BPA (OPA) Integration Process





UT Southwestern

Steps for Requesting a New BPA: (Cassie Packard- Informatics)

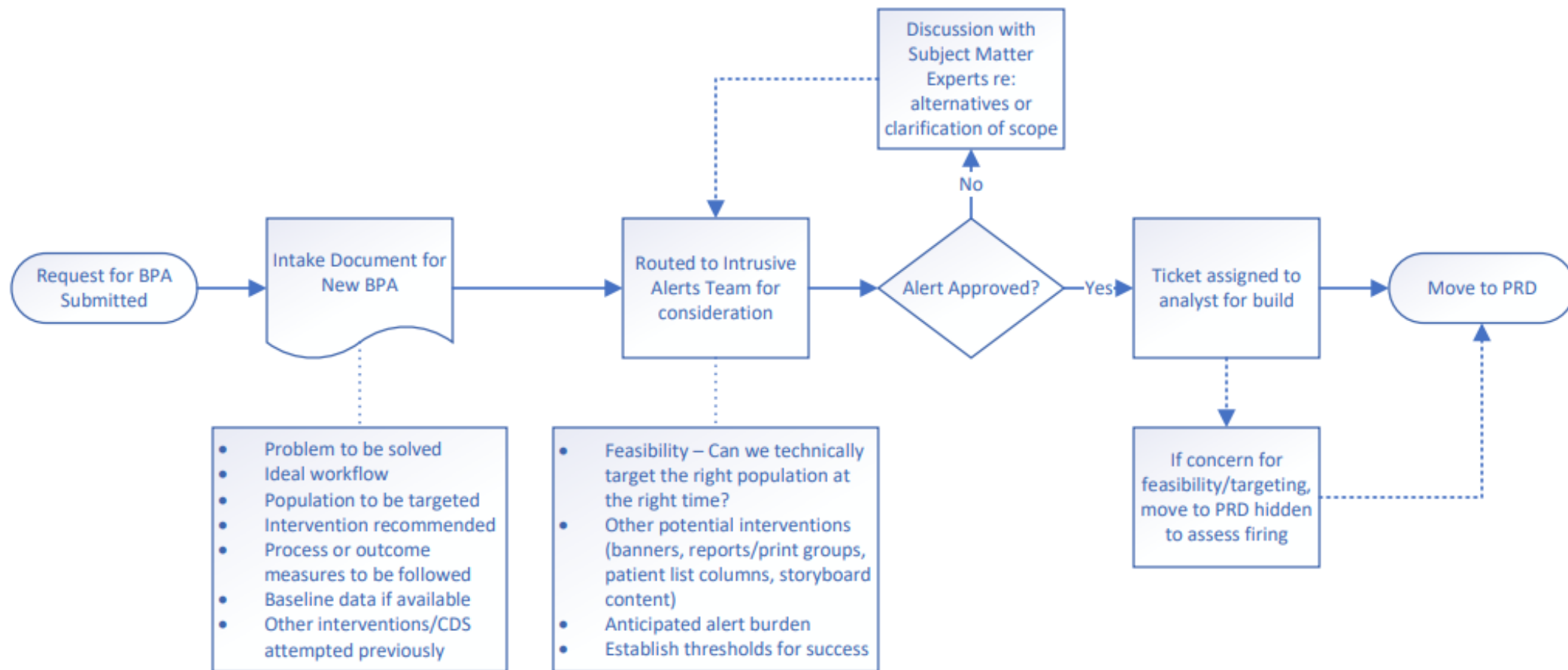


Step 3 completed, but didn't have the build details from the collaborative yet – so we are really waiting on that. As soon as we have the build specs, we can get a specific date for go-live and on the agenda for CDS.

This has been marked as high priority, so we would try to build as quick as we can.



Nationwide Children's Hospital





Grady Memorial Hospital



Hassenfeld Children's Hospital

BPA Process Map NYU Langone (aka OPA at NYULH)

Description of Problem being solved:

- Increase tech use for all with T1D
- Who will receive the BPA
- Logic for patient visit/diagnosis/timeline

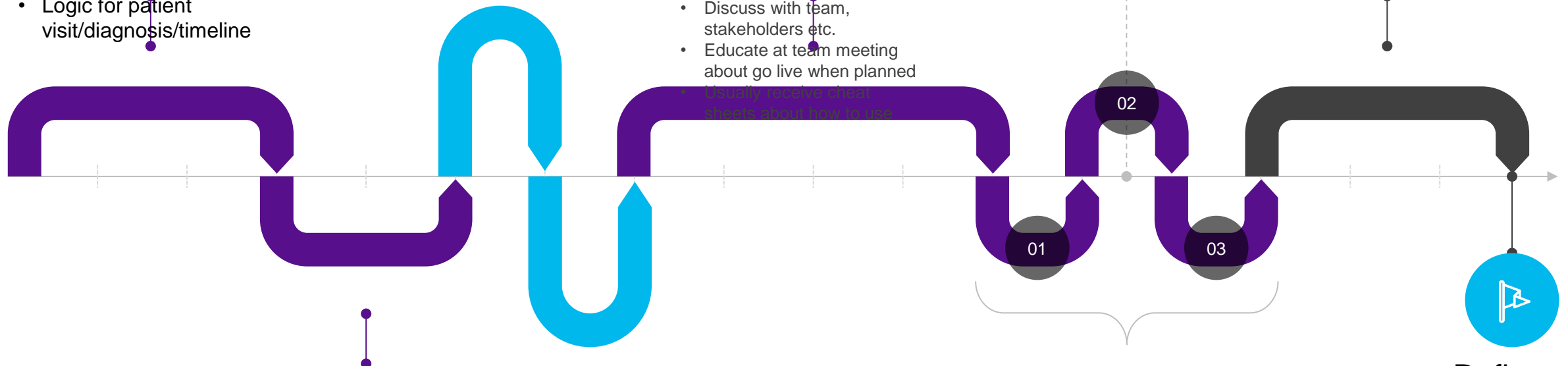
Ticket assigned to MCIT and contact begins

Build

- Flowsheet creator
- BPA/logic creator
- Edits via email/excel
- Then into EPIC sandbox for practice
- Discuss with team, stakeholders etc.
- Educate at team meeting about go live when planned
- Usually receive cheat sheets about how to use

PDSAs

BPA use established with all providers



MCIT Ticket

Approval by Clinical Decision Committee

Go Live!

Prepare all involved, Assign leader: usually RN to help establish use
Sometimes go live only involves one provider prior to moving to entire division.

Refine



Next Steps/ Questions