



T1D
Exchange

Publication Committee Meeting

May 27, 2025

Agenda

- Welcome and Introductions
- Publication Language Guide Updates
 - Review HEAL and Publications Committee Feedback
- Annual Survey Proposal Updates
 - Brief overview of submitted questions
- 2025 Review of Manuscripts
 - ADA 2025 Submissions
 - Active Submissions
- Review and Discuss Publication Process
 - Consider revisions to processes for selecting co-authors and reviewers

Publication Language Guide

Purpose: Create a T1DX-QI Publication Language guide to create consistency in using person-first language across T1DX-QI Publications.

Timeline: Thank you to all who provided feedback on the document. We also sought feedback from our **HEAL** (Health Equity Advancement Lab) Committee.

--Review highlighted items/questions with committee today--

We would like to have this final and ready to disseminate to the full Collaborative before 6/30.



Annual Survey Proposals

University of Wisconsin:

1. Understand how dietitians are utilized to support individuals with diabetes in the clinical setting.
 - Five multiple choice questions
2. Study GLP 1 medications use in children with T2D (disparity of access, insurance coverage, monitoring for side effects, key metrics of success)
 - Six multiple choice questions

Health Care Transitions Work Group: Using branching logic to ask different HCT questions of pediatric and adult centers.

- Two sets of questions; one for adult one for pediatrics
- Seven multiple choice questions
- Still working on the language

Proposals are under review by T1DX to decide about final inclusion in the annual survey this year.



2025 T1DX-QI Presentations Scheduled for ADA Scientific Sessions 2025

Presentation Number	Presentation Title	Presentation Time
276-OR	Examining New-Onset Type 1 Diabetes Educational Practices among Centers in the T1D Exchange Quality Improvement Collaborative (T1DX-QI)	June 22, 2025, 4:00-4:15 PM
1218-P	Benchmarking Ratio of Diabetes Providers to Number of People with Type 1 Diabetes across Nine Pediatric Centers	June 23, 2025, 12:30-1:30 PM
1002-P	HbA1c Improvement with the Addition of Continuous Glucose Monitoring to GLP-1 Agonist Therapy in People with Type 2 Diabetes	June 21, 2025, 12:30-1:30 PM
1139-P	Assessing Clinic Readiness for Implementation of Equitable and Sustainable New Onset Care in the	June 22, 2025, 12:30-1:30 PM
LB-6369	Racial/Ethnic Distribution of People with Diabetes and Diabetes Center Staff – 2024 T1D Exchange Quality Improvement Collaborative (T1DX-QI) Survey Result	June 22, 2025, 12:30-1:30 PM
LB-6370	Inpatient education and discharge support in the T1D Exchange Quality Improvement Collaborative (T1DX-QI)	June 22, 2025, 12:30-1:30 PM
LB-6196	Limited Readiness for Type 1 Diabetes (T1D) Autoantibody Screening and Metabolic Monitoring among Pediatric and Adult Diabetes Centers in the T1DX-Quality Improvement Collaborative (T1DX-QI)	June 22, 2025, 12:30-1:30 PM
LB-6554	Teamwork, Targets, Technology, and Tight Range (4T) in New-Onset T1D: Comparing Outcomes and Rationale for Translation	June 22, 2025, 12:30-1:30 PM
LB-6363	Diabetes Distress Screening in Type 1 Diabetes: Are We Meeting Standards in Psychosocial Care?	June 22, 2025, 12:30-1:30 PM

2025 T1DX-QI Posters Scheduled for ISPAD 2025

- 1. Formation of a Pediatric Type 2 Diabetes Registry: T1D Exchange Quality Improvement Collaborative**
 - a. Ori Odugbesan, Timothy Bol, Nicole Riales, Monica E. Bianco, Ryan Brady, Lily Chao, Kristina Cossen, Sean DeLacey, Carla Demeterco-Berggren, Patrick Hanley, Rohan Henry, Susan Hsieh, Grace K. Kim, Grace Kim, Mindy Lee, Leena Mamilly, Shideh Majidi, Liz Mann, Grace B. Nelson, Jessica Schmitt, Tossaporn Seeherunvong, Shylaja Srinivasan, Mili Vakharia, Risa M. Wolf, Tamara Hannon.
- 2. Benchmarking Non-Insulin Medication Use and Diabetes Outcomes Across Pediatric Type 2 Diabetes Centers**
 - a. Susan Thapa, Nicole Riales, David Maahs, Stephanie Crossen, Carla Demeterco-Berggren, Laura Jacobsen, Manmohan Kamboj, Faisal Malik, Elizabeth Mann, Risa Wolf, Osagie Ebekozien.
- 3. Baseline Statin Use in Youth with Type 2 Diabetes: T1D Exchange QI Collaborative Pediatric T2D Registry Data**
 - a. Puja Singh, Nicole Riales, Ori Odugbesan, Timothy Bol, Monica Bianco, Lily C. Chao, Sean DeLacey, Carla Demeterco-Berggren, Tamara Hannon, Rohan Henry, Grace K. Kim, Grace Kim, Leena Mamilly, Liz Mann, Grace Nelson, Tossaporn Seeherunvong, Shylaja Srinivasan, Mili Vakharia, Risa M. Wolf.
- 4. Coordinating care between type 1 diabetes (T1D) centers and schools: Current practices and opportunities from the T1D Exchange Quality Improvement Collaborative (T1DX-QI)**
 - a. Christine March, Alissa Guarneri, Dhruvi Vora, Elissa Naame, Fran Cogen, Kajal Gandhi, Sarah Lyons, Linda Siminerio, Risa Wolf, Crystal Woodward, Nicole Riales, Ingrid Libman.



2025 T1DX-QI Posters Presented at ATTD 2025

1. **Ranking of Factors Considered Important by Diabetes Providers before Recommending Automated Insulin Delivery Systems**

- a. Osagie Ebekozen, Emma Ospelt, Ori Odugbesan, Mark Clements, Pratibha Rao, Alissa Guarneri, May Kellis, Robert Rapaport, Rona Sonabend, Ananta Addala.

2. **YOUNG ADULT DIABETES TECHNOLOGY USE IN PEDIATRIC AND ADULT PRACTICES**

- a. Sean DeLacey, Saketh Rompicherla, Shideh Majidi, Naomi Fogel, Sarah Corathers, Shivani Agarwal, Roberto Izquierdo, Lauren Golden, Jill Weissberg-Benchell, Osagie Ebekozen.

Review of Current Publications in Process

Phase 4

Short Title: A1c trajectories 3 years after diagnosis

First Author: Mann

Status: Submitted to journal

Target Journal: Diabetes Care

Short Title: Multi-center propensity-score matched observational study of 4,062 type 1 diabetes users of automated insulin delivery systems

First Author: Fogel

Status: 3/26 last status update

Target Journal: Diabetes Therapeutics and Technology



Phase 4

Short Title: Reproductive health counseling in the T1D Exchange Quality Improvement Collaborative(T1DX-QI)

First Author: O'Malley

Status: Submitted to journal

Target Journal: Diabetes Spectrum

Short Title: Factors Considered Important by Diabetes Providers Before Recommending Automated Insulin Delivery Systems: Observations from the T1DX-QI Collaborative

First Author: Ebekozen

Status: Submitted to journal

Target Journal: Diabetes Care



Phase 4

Short Title: Anxiety in Youth and Adults with Type 1 Diabetes and Associations with Clinical Outcomes

First Author: Roberts

Status: Submitted for internal review.

Target Journal: tbd

Short Title: Diabetes transition and technology

First Author: DeLacey

Status: Submitted for internal review.

Target Journal: tbd

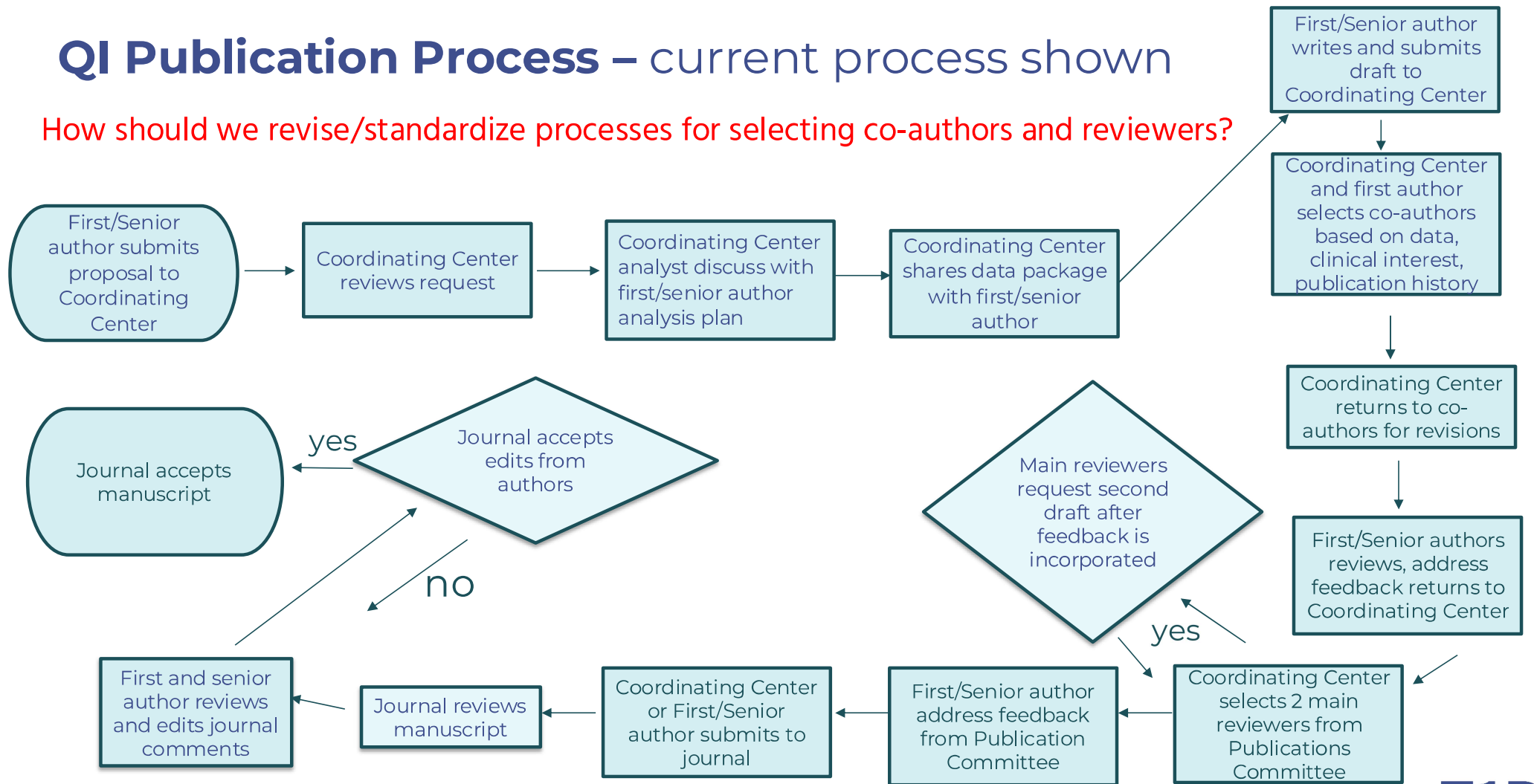
2025 Publication Plans

2025 Publications Based off Special Projects/Annual Survey

1. Staffing Survey (1-2 Manuscripts Mary Pat Gallagher and Ksenia Tonyushkina)
2. School Survey Questions (1 manuscript Christine March)
3. BPA Project (potentially 3 manuscripts, Risa Wolf and Nes Mathioudakis)
4. Breakthrough T1D Screening (1 Manuscript, Laura Jacobsen and Carla Demeterco-Berggren)
5. 4T Group (1 Manuscript)
6. Diabetes Distress Group (1 Manuscript)
7. Health Care Transitions Group (1 Manuscript)
8. T2D Adult Centers (1 Manuscript)
9. Clinical Diabetes Special Issue QI Success Stories (7 Stories)
10. T2D Pediatric Work Group (3 Abstracts)

QI Publication Process – current process shown

How should we revise/standardize processes for selecting co-authors and reviewers?



Discussion of Publishing Process

- Soliciting and reviewing publication proposals
 - TIDX-QI Data, Publication, and Presentation Request Form:
 - https://t1d.iad1.qualtrics.com/jfe/form/SV_ba4t5jpizGFneDA
- Selection of co-authors
 - Updating areas of interest:
https://t1d.iad1.qualtrics.com/jfe/form/SV_3gADJGeEHIZ9LpQ
 - How to be equitable?
- Selection of Publications Committee Reviewers
 - Current process is labor-intensive and non-systematic – standardize?