



**T1D**  
*Exchange*

# QI Project: Screening for stage 1 And stage 2 type 1 diabetes

**July 19, 2024**

# Agenda

- Introduction/Welcome
- Welcome/Project Aim
- Monthly Data Reporting/Smartsheet Overview
- Center Screening Process Maps
- Coordinating Center Updates

## AIM Statements

---

Increase by at least 15% (from baseline) the proportion of people screened for T1D in 18 months. ( June 2024- December 2025)

---

Increase by at least 30% (from baseline) the proportion of eligible people monitored for progression to stage 3 T1D over 18 months. (June 2024-December 2025)

Timeline	Expectations
July 2024	<ul style="list-style-type: none"><li>• Attend monthly group coaching calls</li><li>• Create process maps for screening and annotate pain points</li><li>• All centers will report baseline data to Smartsheet (January 2024 to June 2024)</li></ul>
August 2024	<ul style="list-style-type: none"><li>• Attend monthly calls</li><li>• Teams will perform a fishbone activity/ create KDD</li><li>• Team will use the PICK tool to prioritize interventions/changes</li></ul>
September 2024	<ul style="list-style-type: none"><li>• Attend monthly coaching calls</li><li>• Teams report on their recent intervention activities.</li><li>• The group will continue to test PDSA Cycles.</li></ul>



# Monthly Data Reporting/Smartsheet Overview

# Project Metrics

## Screening

A) Number of individuals seen in reporting month who have been screened for T1D antibodies

## Autoantibody Screening

1) Number of individuals in [A] that have been screened and confirmed positive for antibodies (GAD65, Anti-IA2, Tyrosine Phosphatases IA2 and IA-2 $\beta$ , ZnT8)

1a) Number of individuals in [A] that have been confirmed positive for a single autoantibody

1b) Number of individuals in [A] that have been confirmed positive for multiple autoantibodies

## Stage 1 Diagnosis

2) Number of individuals in [A] who have multiple islet autoantibodies, normal blood glucose

## Stage 2 Diagnosis

3) Number of individuals in [A] who have multiple islet autoantibodies, abnormal glucose tolerance OR HbA1c 5.7-6.4%

## Stage 3 Diagnosis/New Onset Patients

4) Number of individuals in [A] who have blood glucose levels above ADA diagnostic thresholds OR HbA1c  $\geq$  6.5%

# Project Metrics

## Monitoring

5) Number of individuals in [2] + [3] with a scheduled endocrinology (per monitoring guidelines)\*

## DKA Events

6) Number of individuals monitored for T1D diagnosis in last 12 months who have a DKA in reporting month

## Intervention

7) Number of individuals in [3] offered Teplizumab prescription



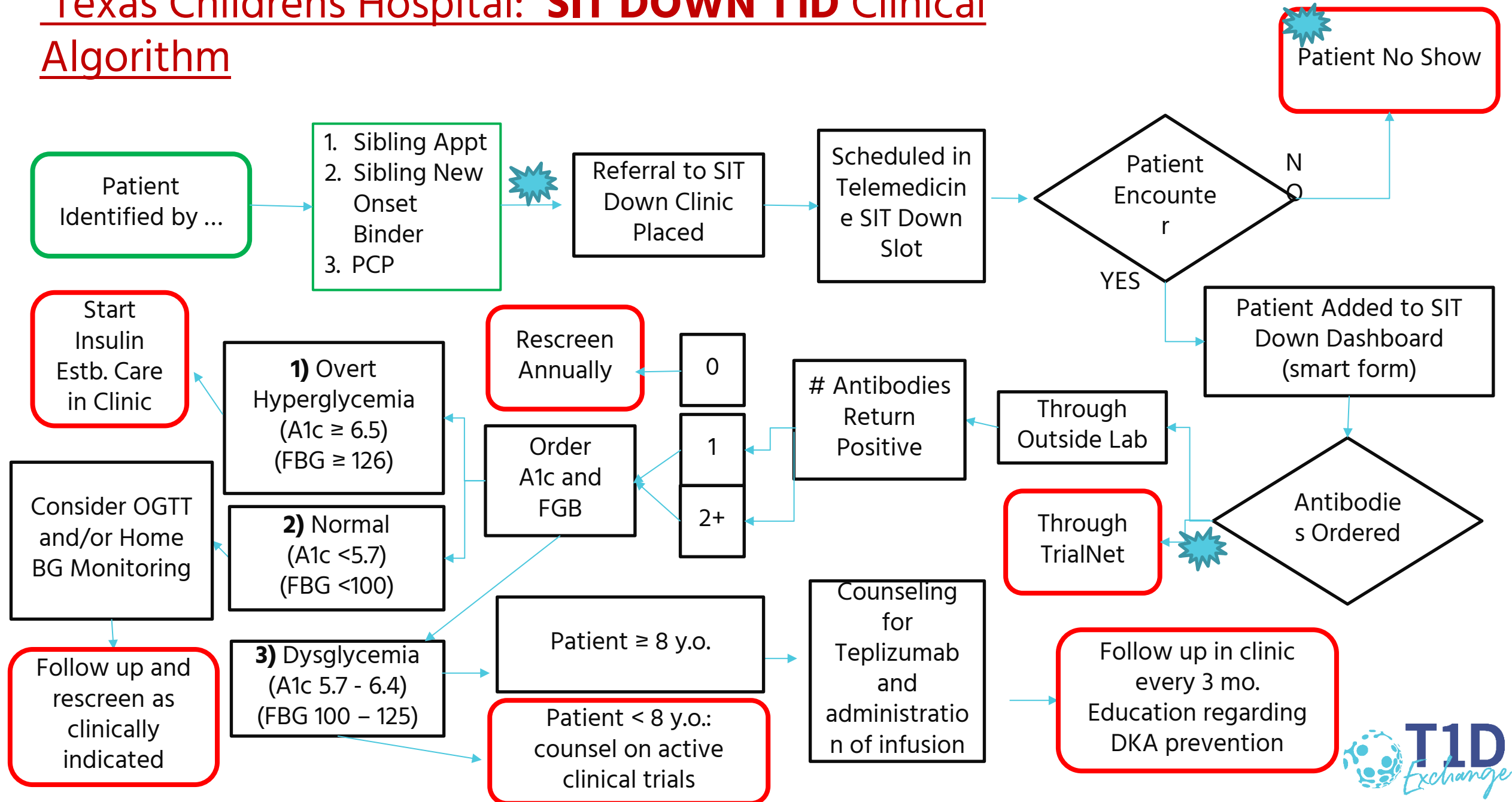
# Center Screening Process Maps





# Texas Children's Hospital

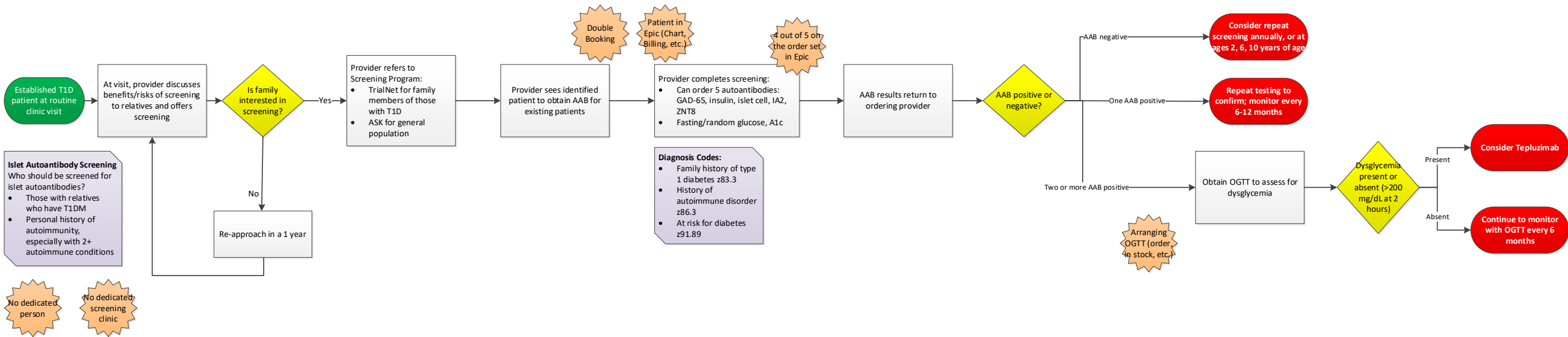
# Texas Childrens Hospital: **SIT DOWN T1D** Clinical Algorithm





# Lurie Children's Hospital

# Autoantibody Screening Process Map

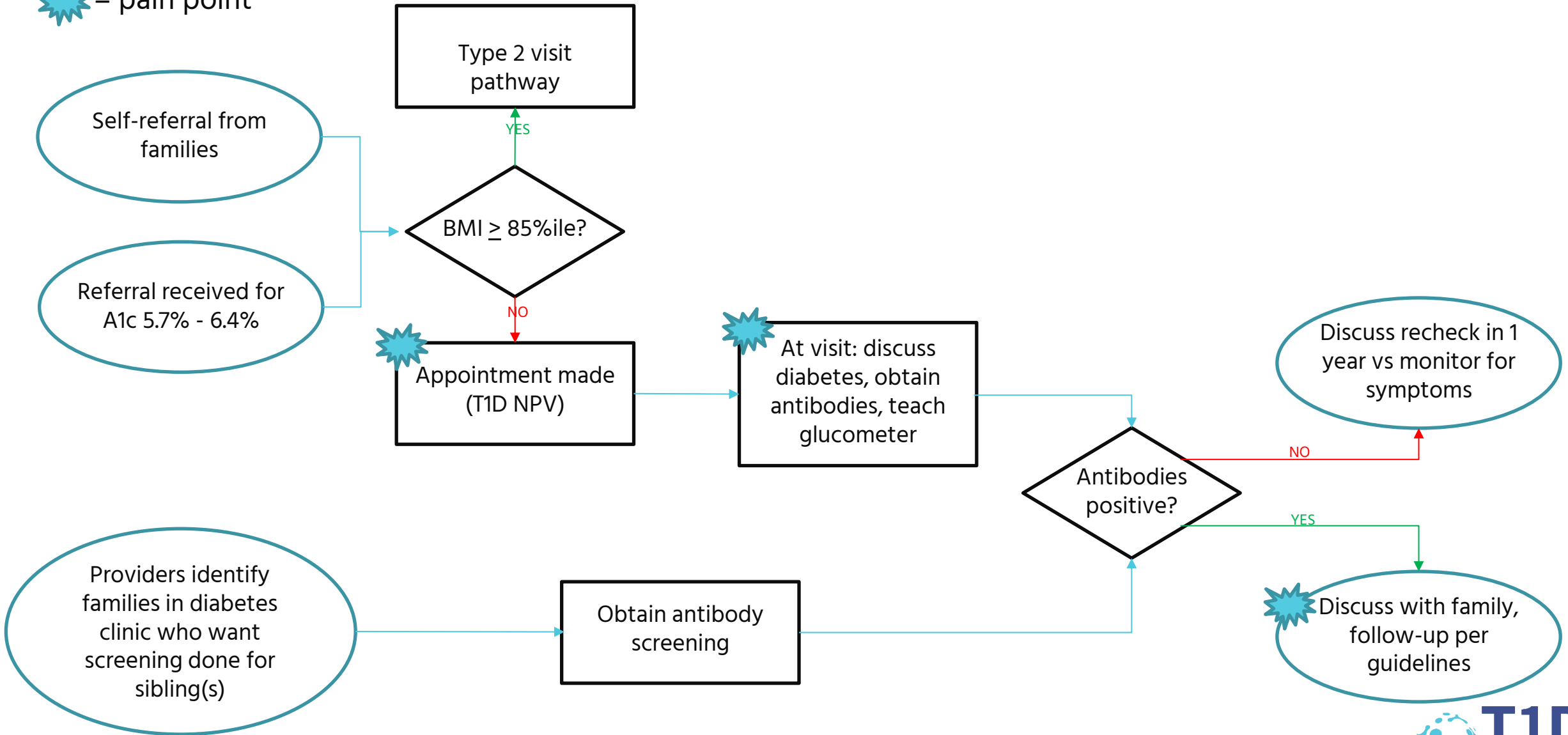




# Children's National Hospital

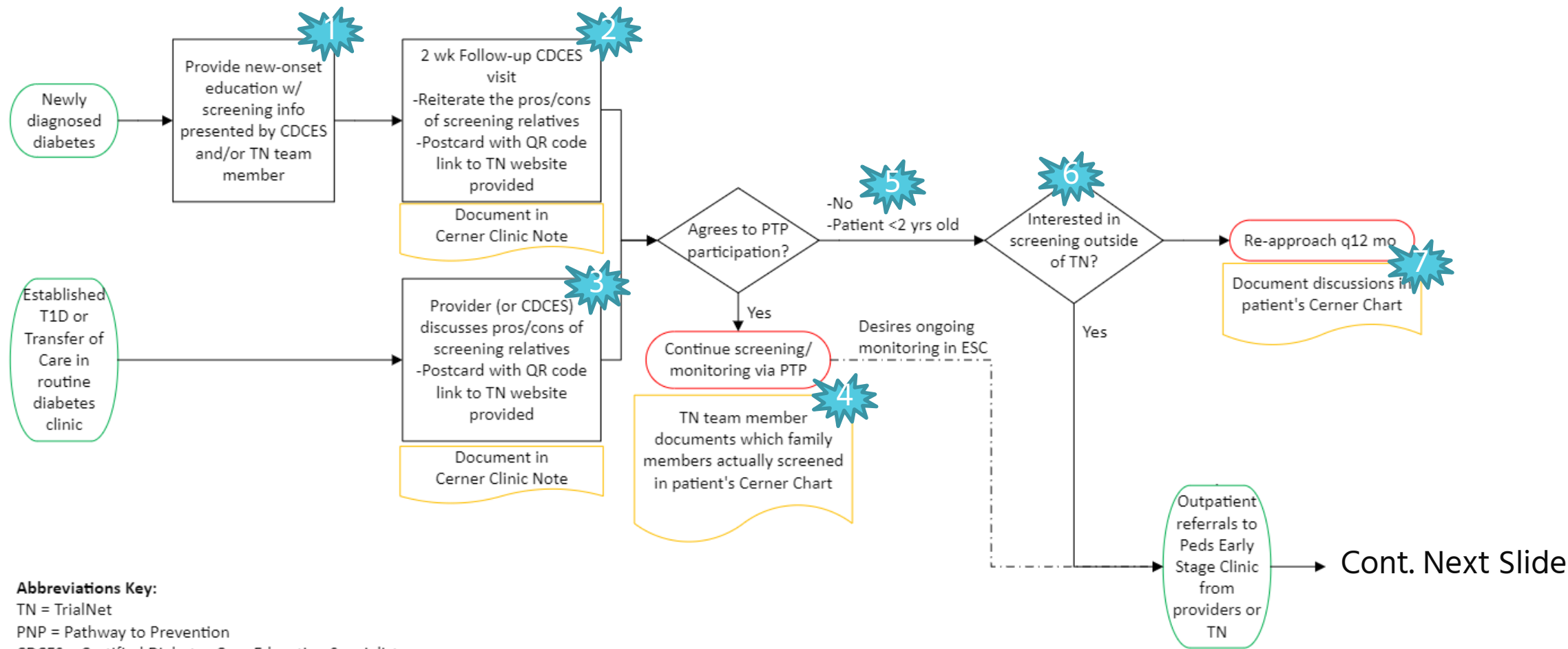
# Screening for Early-Stage Type 1 Diabetes

 = pain point





# University of Indiana



**Abbreviations Key:**

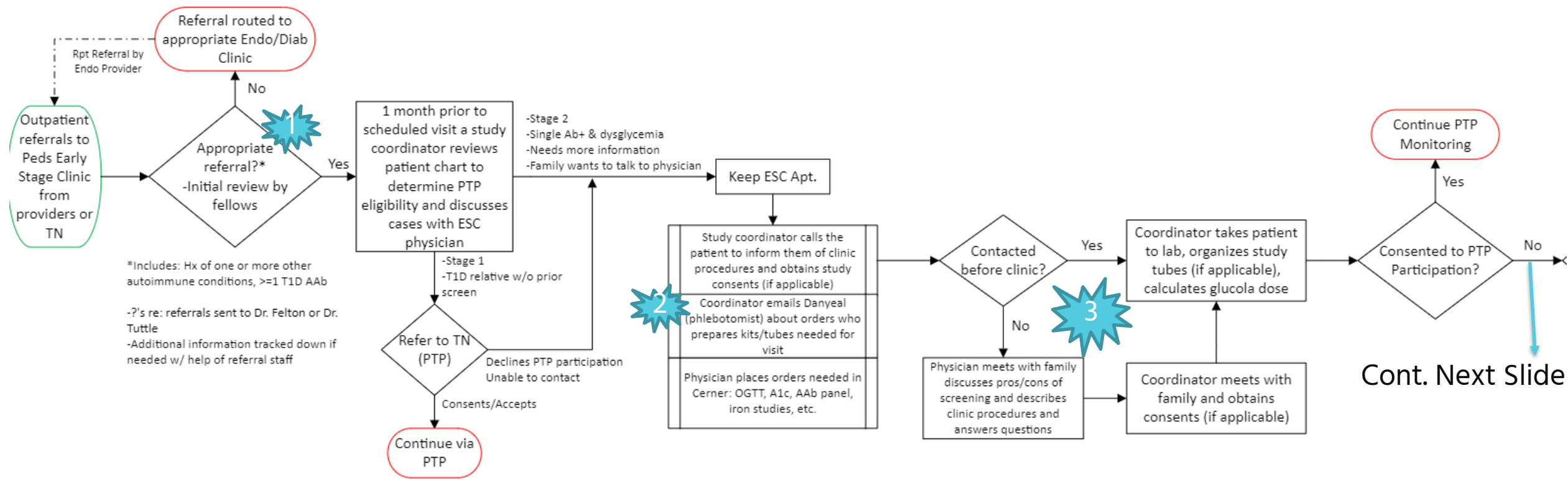
TN = TrialNet

PNP = Pathway to Prevention

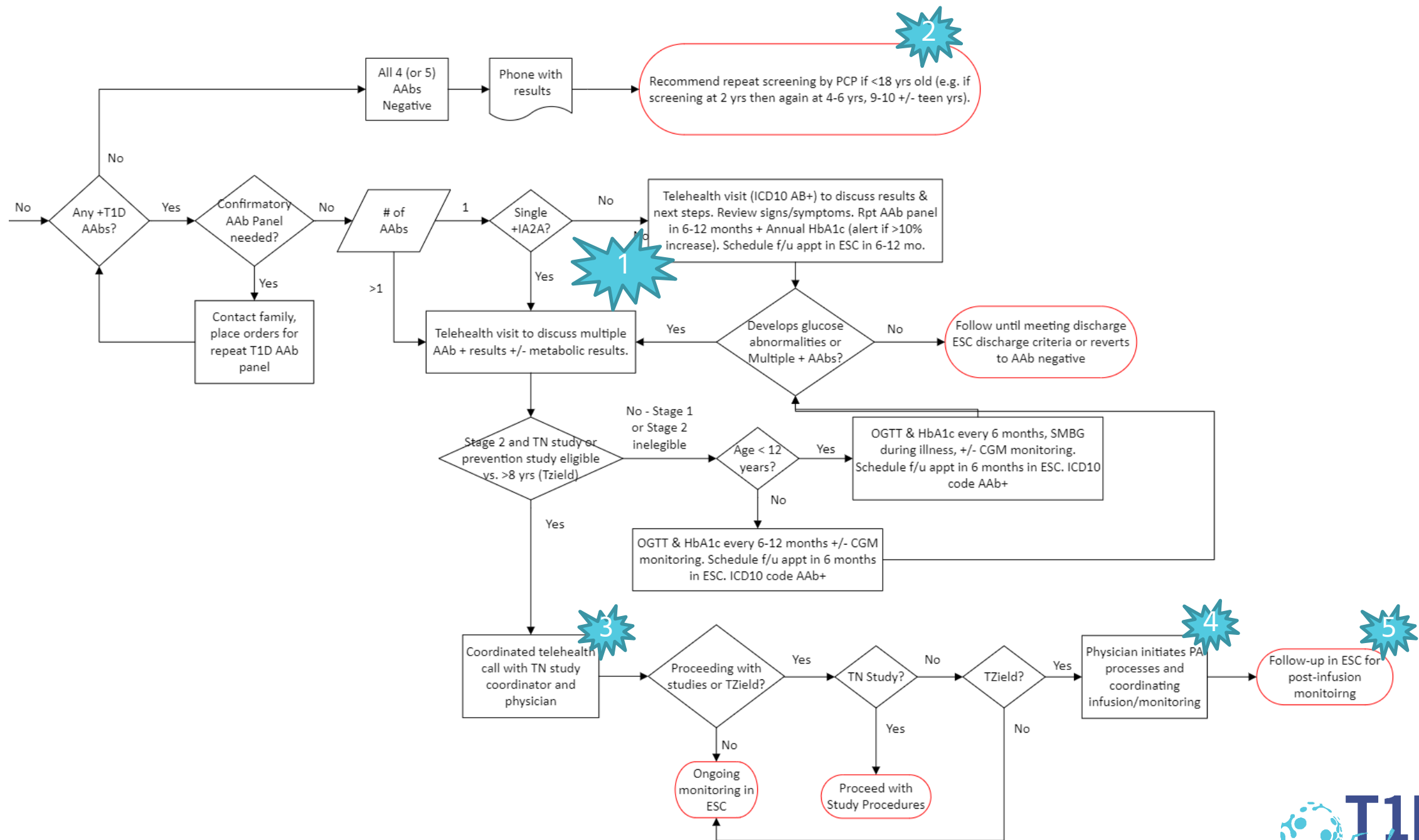
CDCES = Certified Diabetes Care Education Specialist

ESC = Early Stage Clinic





Cont. Next Slide





# Coordinating Center Updates



# Next Steps