

Insulin Pump QI Project

Nationwide Children's Hospital
Collaborative Meeting –October 2023

Project Aim

Increase utilization of insulin pump technology and
insulin pump equity
among T1D patients treated
at NCH Main Campus outpatient clinic
from 40% to 55% by 12/31/2023 and sustain for 1 year.



NATIONWIDE CHILDREN'S®
When your child needs a hospital, everything matters.

Zero Hero™
Create a safe day. Every day.

Improving insulin pumps utilization and equity among type 1 diabetes patients

Interventions

Updated: 9/17/23

Aim

Improve initiation of insulin pump technology and insulin pump equity among T1D patients treated at NCH Main Campus outpatient clinic from 40% to 55% by 12/31/2023 and sustain for 1 year.

Global Goal:
Improve healthcare outcomes among T1D patients

Key Drivers

Provider Assessment of Patient Capabilities, Patient and Provider Awareness

Verbal and Written Language Comprehension/
Sociodemographic Considerations

Variation in:
1) Appointment Schedule;
2) Staff Availability; and
3) Clinic Uptake Process

Access to Adjunctive Technology

Support/Care for Insulin Pumps from collaborative providers

-- Standardize pump initiation criteria and educational/awareness documents for providers and patients
-- Best Practice Alert reminder
-- Revision of pump patient education
-- Survey of provider explicit and implicit bias (Diabetes Provider Implicit Bias (D-PIB) tool) and confidence

-- Translation services available in clinic / pump class visits
-- Translation of written education curriculum and after-visit instructions
-- Translation of pump class and pump start instructions

-- Consideration of attendant social determinants of health (both +/-) through survey information

-- Improve staff availability & allocation for pump start education through DNE involvement and training
-- Standardize pump company engagement and education
-- Decrease barriers for pump start class access and cost

-- Improved time in range / A1c disparity advocacy- CGM sample program

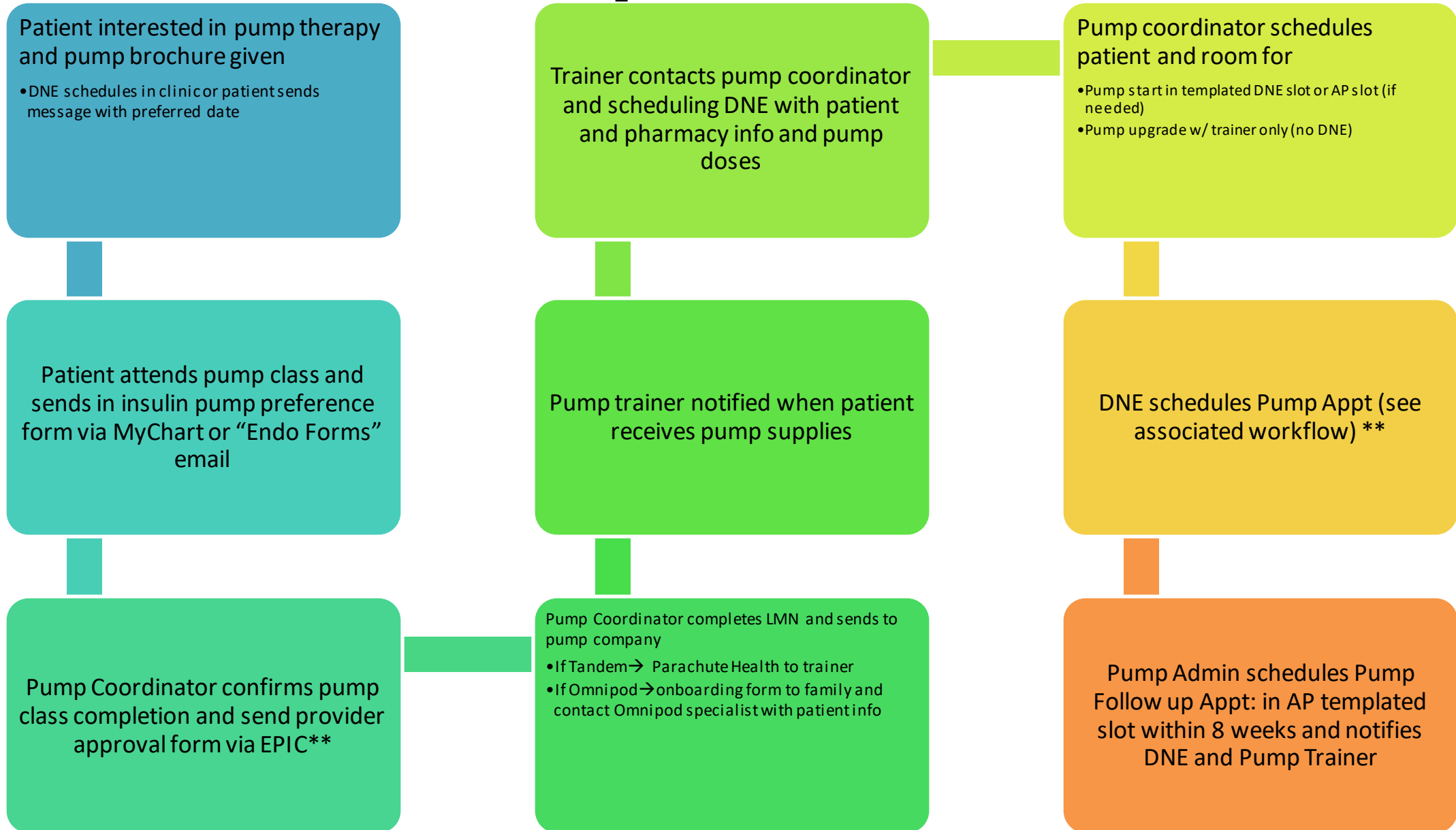
-- Workflows between DASH program/PCP network and Endocrinology

Key: **Complete**

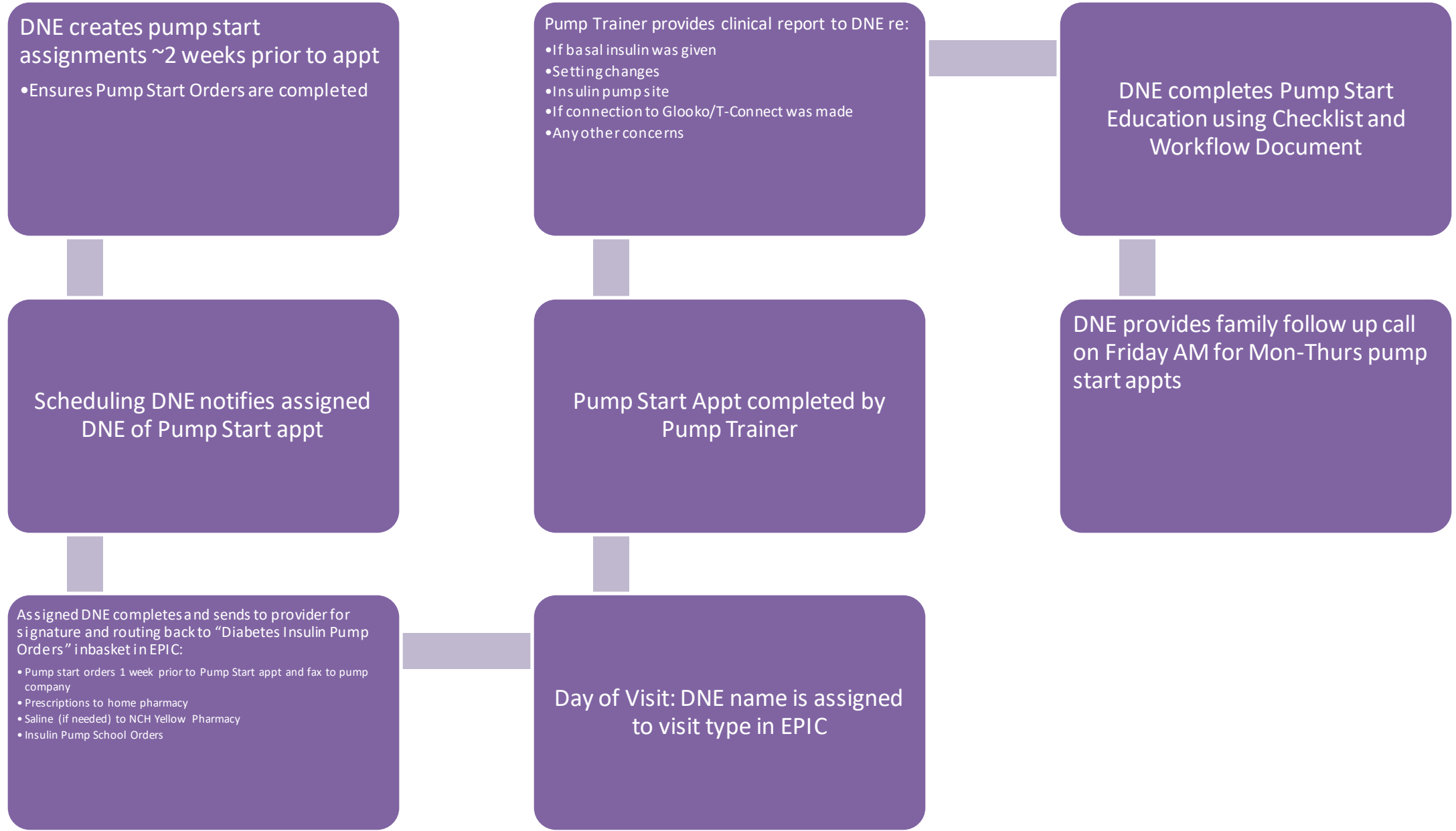
In Process

Pending

Clinic Pump Start Workflow



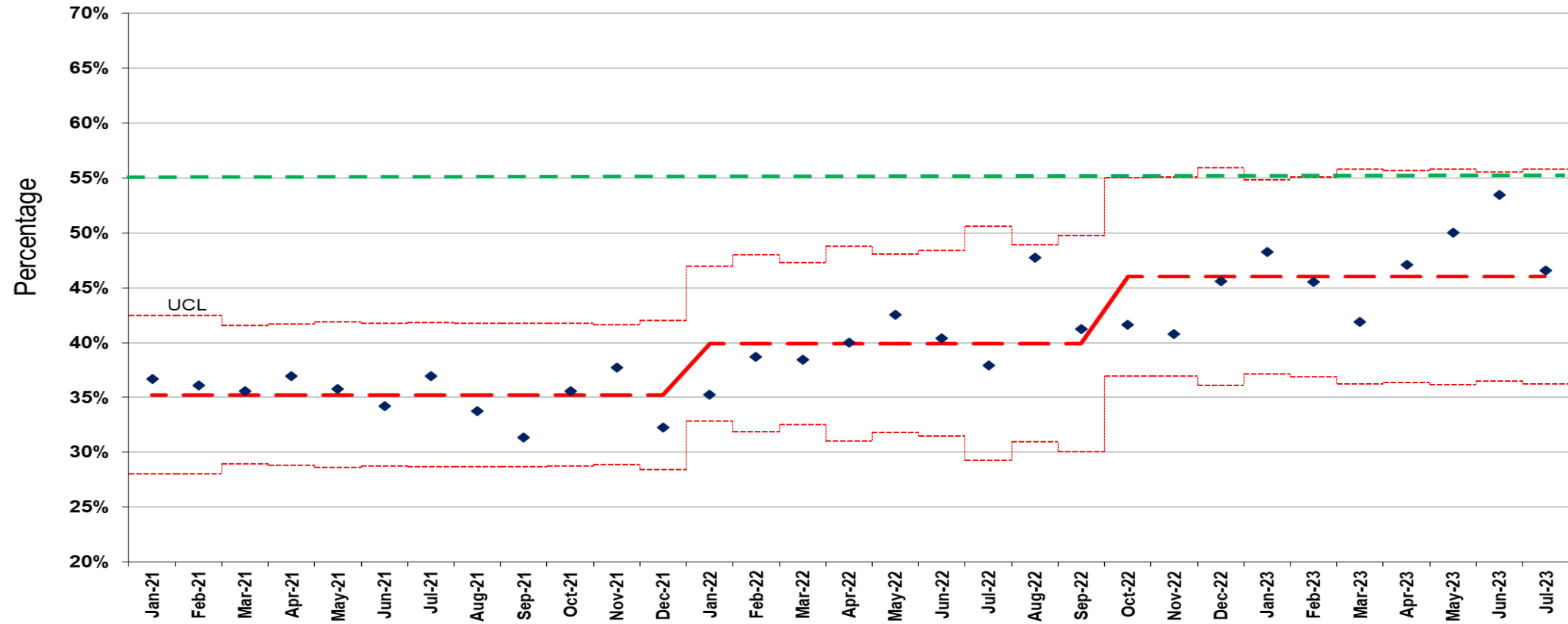
DNE Pump Start Workflow





NATIONWIDE CHILDREN'S
When your child needs a hospital, everything matters.

Pump Utilization



	2021												2022												2023						
	Jan	Feb	Mar	Apr	May	Jun	Jul	Aug	Sept	Oct	Nov	Dec	Jan	Feb	Mar	Apr	May	Jun	Jul	Aug	Sept	Oct	Nov	Dec	Jan	Feb	Mar	Apr	May	Jun	Jul
Numerator description	145	143	184	183	167	167	177	162	151	173	190	144	153	128	153	110	139	122	72	128	92	114	111	104	138	123	98	113	116	132	109
Denominator description	395	396	517	495	467	488	479	480	482	486	504	446	434	331	398	275	327	302	190	268	223	274	272	228	286	270	234	240	232	247	234