



T1D
Exchange

QI Publications Committee
February 21, 2023

Agenda

- Introductions
- Publications updates
- Upcoming Conferences
 - ATTD 2023
 - ADA 2023
- Abstract Flow Chart Review
- Committee Member Expectations

Q1 2023 Manuscript Scorecard – February 2023

- Phase 1 (New Idea): **23**
- Phase 2 (Internal group) **12**
- Phase 3 (Publication committee review) **4**
- Phase 4 (Journal Review): **5**
- Phase 5 (Manuscript Accepted/Published): **2**

Phases of Manuscript Process

- Phase 1 (New Idea)
 - First stages of drafting, data analysis planning
- Phase 2 (Internal Review)
 - First draft complete, co-authors review and provide feedback
- Phase 3 (Publication Committee Review)
 - First Author in cooperates co-author feedback, second round of edits, send to publication committee for feedback
- Phase 4 (Journal Review)
 - First author in cooperates publication committee feedback, submit to target journal
- Phase 5 (Manuscript Accepted/Published)
 - First author receives acceptance, makes journal edits (if necessary)

Clinic Representation in Q4 Manuscripts and Abstracts

Pediatrics

- Childrens Mercy (6)
- Cincinatti Children's (4)
- Hassenfeld Childrens at NYU (4)
- Cook (2)
- Rady (2)
- UCSF (2)
- Alabama (1)
- Barbara Davis Center (1)
- CHOA (1)
- Childrens National (1)
- Le Bonheur Children's (1)
- Mt Sinia (1)
- Nationwide (1)
- Seattle (1)
- Stanford (1)
- SUNY (1)
- TCH (1)
- UF (1)
- UM (1)
- Wisconsin (1)

Clinic Representation in Q4 Manuscripts and Abstracts

Adults

- Albert Einstein (2)
- BDC (1)
- Grady (1)
- Stanford (1)

Phase 5 published Manuscript Q4 2022

*Clinical***DIABETES**

Current ▾

Browse ▾

Info & About ▾

Podcasts ▾

Subs

FEATURE ARTICLE | OCTOBER 19 2022

Baseline Quality Improvement Capacity of 33 Endocrinology Centers Participating in the T1D Exchange Quality Improvement Collaborative **FREE**

Brynn E. Marks ; Ann Mungmode; Anna Neyman; Laura Levin; Nicole Riales; Donna Eng; Joyce M. Lee; Marina Basina; Nana Hawah-Jones; Elizabeth Mann; Grenye O'Malley; Meredith Wilkes; Devin Steenkamp; Grazia Aleppo; Siham Accacha; Osagie Ebekozi on behalf of the T1D Exchange Quality Improvement Collaborative



Corresponding author: Brynn E. Marks, marksb@chop.edu

Clin Diabetes cd220071

<https://doi.org/10.2337/cd22-0071>



Split-Screen



PDF



Share ▾



Cite



Get Permissions

This article describes the evolution of the Type 1 Diabetes Exchange Quality Improvement Collaborative (T1DX-QI) and provides insight into the development and growth of a successful type 1 diabetes quality improvement (QI) program. Since its inception 8 years ago, the collaborative has expanded to include centers across the United States with varying levels of QI experience, while simultaneously achieving many tangible improvements in type 1 diabetes care. These successes underscore the importance of learning health systems, data-sharing, benchmarking, and peer collaboration as drivers for continuous QI. Future efforts will include recruiting additional small- to medium-sized centers focused on adult care and underserved communities to further the goal of improving care and outcomes for all people living



Phase 5 published Manuscript Q4 2022

*Clinical***DIABETES**

Current ▾

Browse ▾

Info & About ▾

Podcasts ▾



FEATURE ARTICLE | OCTOBER 17 2022

Factors Associated With Improved A1C Among Adults With Type 1 Diabetes in the United States **FREE**

Halis K. Akturk ; Saketh Rompicherla; Nicole Riales ; Marisa Desimone; Ruth S. Weinstock; Sonya J. Haw; David C. Ziemer
Jane K. Dickinson ; Shivani Agarwal; Osagie Ebekoziem ; Sarit Polsky on behalf of T1D Exchange QI Collaborative



* Co-senior authors

Corresponding author: Halis K. Akturk, halis.akturk@cuanschutz.edu

Clin Diabetes cd220067

<https://doi.org/10.2337/cd22-0067>



Split-Screen



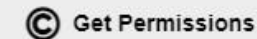
PDF



Share ▾



Cite



Get Permissions

Many adults with diabetes do not reach optimal glycemic targets, and, despite advances in diabetes management, diabetes technology use remains significantly lower in racial/ethnic minority groups. This study aimed to identify factors associated with achieving the recommended A1C target of <7% using data on 12,035 adults with type 1 diabetes from 15 centers participating in the T1D Exchange Quality Improvement Collaborative. Individuals attaining the target A1C were more likely to be older, White, have private health insurance, and use diabetes technology and less likely to report depressive symptoms or episodes of severe hypoglycemia or diabetic ketoacidosis than those with higher A1C levels. These findings highlight the importance of overcoming inequities in diabetes care.



Phase 5 published Manuscript Q4 2022

*Clinical***DIABETES**

Current ▾

Browse ▾

Info & About ▾

Podcasts ▾

Subs

COMMENTARY | OCTOBER 24 2022

Evolution of the T1D Exchange Quality Improvement Collaborative (T1DX-QI): Using Real-World Data and Quality Improvement to Advance Diabetes Outcomes **FREE**

Shideh Majidi ; Nicole Riales; Shivani Agarwal;
Osagie Ebekozien on behalf of the T1D Exchange Quality Improvement Collaborative

 Check for updates

Corresponding author: Shideh Majidi, smajidi4@childrensnational.org

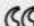
Clin Diabetes cd220074

<https://doi.org/10.2337/cd22-0074>

 Split-Screen

 PDF

 Share ▾

 Cite

 Get Permissions

This article contains supplementary material online at <https://doi.org/10.2337/figshare.21096403>.

This content is only available via PDF.

 PDF



Phase 5 published Manuscript Q4 2022

Wiley Online Library

Search

Journal of Diabetes
Open Access



COMMENTARY | Open Access |

Commentary on the T1D exchange quality improvement collaborative learning session November 2022 abstracts

Shivani Agarwal, Nicole Riales , Shideh Majidi, Robert Rapaport, Osagie Ebekozen, for the T1DX-QI Collaborative

First published: 02 November 2022 | <https://doi.org/10.1111/1753-0407.13327>

For more information of the Abstracts, please see [Journal of Diabetes, Volume 14, Issue S1](#).

Funding information: Leona M. and Harry B. Helmsley Charitable Trust

SECTIONS


PDF TOOLS SHARE


1 INTRODUCTION

The T1D Exchange Quality Improvement Collaborative (T1DX-QI) continues to be a leader in driving innovation advancements in type 1 diabetes (T1D) care.¹ With over 50 diabetes centers in its consortium across the United States, including 32 pediatric and 18 adult centers, T1DX-QI has been able to capture T1D electronic medical record data on over 55 000 people with T1D. Through patient and parent partners, an engaged group of multidisciplinary healthcare providers, and an advisory board specifically focused on racial-ethnic equity, T1DX-QI has been able to glean vital insights about real-world diabetes care and outcomes, especially among those underserved and traditionally excluded from




Phase 5 published Manuscript Q4 2022



DIABETES RESEARCH AND CLINICAL PRACTICE 

RESEARCH ARTICLE | VOLUME 194, 110156, DECEMBER 2022 [Download Full Issue](#)

Impact of diabetes status and related factors on COVID-19-associated hospitalization: A nationwide retrospective cohort study of 116,370 adults with SARS-CoV-2 infection

Erin M. Tallon   • Osagie Ebekoziem • Janine Sanchez • ... Chelsey Smith • Chi-Ren Shyu • Mark A. Clements • [Show all authors](#)

[Open Access](#) • Published: November 14, 2022 • DOI: <https://doi.org/10.1016/j.diabres.2022.110156> • [Check for updates](#)

490,373 patients release of the C
PDF
175,468 patients had a laboratory test considered SARS-CoV-2 infection encounter that qualified the database (see Supplement
130,228 patients met criteria for a diabetes, type 2 diabetes, or no diabetes per the Surveillance, Prevention, and Diabetes Mellitus (SUPREME-DM) algorithm. SUPREME-DM criteria for having a Drug Administration Algorithm (Opti

Abstract

Keywords

Introduction

Materials and methods

Results

Abstract

Aims

We examined diabetes status (no diabetes; type 1 diabetes [T1D]; type 2 diabetes [T2D]) and other demographic and clinical factors as correlates of coronavirus disease 2019 (COVID-19)-related hospitalization. Further, we evaluated predictors of COVID-19-related hospitalization in T1D and T2D.

Methods

Phase 5 published Manuscript Q1 2023


Psychosocial Aspects (J Pierce, Section Editor) | [Published: 20 December 2022](#)


Implementation of Psychosocial Screening into Diabetes Clinics: Experience from the Type 1 Diabetes Exchange Quality Improvement Network

[Sarah Corathers](#) , [Desireé N. Williford](#), [Jessica Kichler](#), [Laura Smith](#), [Emma Ospelt](#), [Saketh Rompicherla](#), [Alissa Roberts](#), [Priya Prahalad](#), [Marina Basina](#), [Cynthia Muñoz](#) & [Osagie Ebekozen](#)

[Current Diabetes Reports](#) (2022) | [Cite this article](#)

567 Accesses | **2** Altmetric | [Metrics](#)

 A [Correction](#) to this article was published on 28 January 2023

 This article has been [updated](#)

Abstract

Phase 5 published Manuscript Q1 2023

*Clinical***DIABETES**

Current ▾

Browse ▾

Info & About ▾

Podcasts ▾

Subsc

QUALITY IMPROVEMENT SUCCESS STORY | FEBRUARY 15 2023

Connecting From Afar: Implementation of Remote Data-Sharing for Patients With Type 1 Diabetes on Insulin Pump Therapy ✓

Monica Grimaldi; Lisania Cardenas; Aleida Maria Saenz; Maddison Saalinger; Ori Odugbesan; Nicole Riales ; Osagie Ebekozen ; Ernesto Bernal-Mizrachi ; Francesco Vendrame  



Corresponding author: Francesco Vendrame, fvendrame@med.miami.edu

Clin Diabetes cd220084

<https://doi.org/10.2337/cd22-0084>

 Share ▾

 Cite

 Get Permissions

Quality Improvement Success Stories are published by the American Diabetes Association in collaboration with the American College of Physicians and the National Diabetes Education Program. This series is intended to highlight best practices and strategies from programs and clinics that have successfully improved the quality of care for people with diabetes or related conditions. Each article in the series is reviewed and follows a standard format developed by the editors of *Clinical Diabetes*. The following article describes an effort to improve the remote collection of insulin pump data in an academic center in South Florida.

This series is published by the American Diabetes Association in collaboration with the American College of Physicians, Inc., and the National Diabetes Education Program. The American College of Physicians and the American College of Physicians logos are trademarks or registered trademarks of American College of Physicians, Inc., in the United States and shall not be used otherwise by any third party without the prior express written consent of the American College of Physicians, Inc. Likewise, products and materials that are not developed by or in partnership with the National Diabetes Education Program are prohibited from using the National Diabetes Education Program



Phase 4: Manuscripts Under Journal Review

Short Title: Diabetes Status and Thrombotic Events

First Author: Gallagher and Tallon

Last Author: Clements

Status: review/resubmit

Target Journal: Diabetes Care

Short Title: Telemedicine Adoption for Type 1 Diabetes Care

First Author: Lee

Last Author: Vendrame

Status: submitted

Target Journal: Diabetes Technology and Therapeutics

Phase 4: Manuscripts Under Journal Review

Short Title: Benchmarking CGM and Pump use for Peds

First Author: Prahalad

Last Author: Ebekozien

Status: submitted

Target Journal: Pediatric Diabetes

Short Title: Depression Rates in Youth with Type 1 Diabetes

First Author: Roberts

Last Author: Malik

Status: submitted

Target Journal: Pediatric Diabetes

Phase 4: Manuscripts Under Journal Review

Short Title: Benchmarking CGM and Pump use for Adults

First author: Sullivan

Last Author: Steenkamp

Status: review and resubmit

Target Journal: Journal of Diabetes Science and Technology

Short Title: Insulin Pump Trends and HbA1c Association

First author: Gandhi

Last Author: Kamboj

Status: reformat

Target Journal: Clinical Diabetes

Phase 4: Manuscripts Under Journal Review

Short Title: Insurance and COVID-19 Outcomes

First Authors: Miyazaki

Last Author: Dickinson

Status: submitted

Target Journal: Diabetes Spectrum

Phase 3: Publication Committee Review

Short Title: Fear of Hypoglycemia

First author: Peter

Last author: Mitchell

Status: In review

Target Journal: BMJ Open Diabetes
Research and Care

Short Title: Climate Change and
Diabetes

First Authors: Ospelt

Last Author: Ebekozi

Status: In review

Target Journal: Clinical Diabetology

Phase 3: Publication Committee Review

Short Title: Switch rate for BGM to CGM

First Author: Noor

Last Author: Ebekozien

Status: In progress

Target Journal: Diabetes
Technology and Therapeutics

Short Title: Real World CGM
Insights

First Authors: Noor

Last Author: Ebekozien

Status: In progress

Target Journal: Diabetes
Technology and Therapeutics

Phase 2: Internal Author Review

Short Title: HbA1C and Equity
Trend 2016-2021

First Author: Mungmode

Last Author: Alonso

Status: In progress

Target Journal: Diabetes Care

Short Title: Understanding
Provider's Readiness and Attitudes
Toward Screening

First Authors: Ospelt

Last Author: Ebekozien

Status: In progress

Target Journal: Clinical Diabetes

Phase 2: Internal Author Review

Short Title: Operationalizing Racial Equity

First Author: Addala

Last Author: Ebekozien

Status: In progress

Target Journal: Frontiers in Endocrinology

Short Title: Transitions of Care

First Authors: Malik

Last Author: Corathers

Status: In progress

Target Journal: Diabetes Care

Phase 2: Internal Author Review

Short Title: LGBTQ Documentation

Short Title: Depression Screening,
QI Insights

First Author: Raymond

First Authors: Muñoz

Last Author: Majidi

Last Author: Dei Tutu

Status: In progress

Status: In progress

Target Journal: Endocrinology

Target Journal: Clinical Diabetes

Phase 2: Internal Author Review

Short Title: Endo Staffing Tools and Glycemic Targets

First Author: Gallagher
Last Author: Ebekoziem

Status: In progress

Target Journal: Endocrine Practice

Short Title: DPV and T1DX Patients less than 6 years

First Authors: Outside T1DX
Last Author: Maahs

Status: In progress

Target Journal: Diabetes Care

Phase 2: Internal Author Review

Short Title: BMI Trends for Pediatrics and Adults

First Authors: Nelson

Last Author: Agarwal

Status: In progress

Target Journal: Diabetes Care

Short Title: DPV/T1DX BMI Trend Comparisons

First Authors: Outside T1DX

Last Author: Noor

Status: In progress

Target Journal: Journal of Diabetes

ATTD 2023 Accepted Abstracts

- 1. Practical Strategies to Increase Continuous Glucose Monitors (CGM) Use for Underserved Patients: Results from the T1D Exchange Multicenter Study**
 1. Ori Odugbesan, Ann Mungmode, Nicole Riales, Don Buckingham, Grace Nelson, Shivani Agarwal, Amy Grant, Trevon Wright, Emilie Hess, Osagie Ebekozen
- 2. Multi-Center Provider Perspective on Barriers to Smart Insulin Pen**
 1. Ori Odugbesan, Ann Mungmode, Trevon Wright, Grace Nelson Grazia Aleppo, Alyson Meyers, Grenye O'Malley, Alexis McKee, Priya Prhalad, Sandra Tsai, Brian Miyazaki, Osagie Ebekozen
- 3. Patient reported Diabetic Ketoacidosis among Hybrid Close Loop System (HCLS) users: Real world evidence form a multi-center study for people with Type 1 Diabetes**
 1. Osagie Ebekozen, Carla Demeterco-Berggren, Mark Clements, Shideh Majidi, Faisal Malik, Susan Hsieh, Sonya Haw, Manmohan Kamboj, Nudrat Noor
- 4. Hemoglobin A1c levels among people with Type 1 Diabetes switching from self-monitoring of blood glucose to real-time CGM use: A retrospective longitudinal study**
 1. Nudrat Noor, Elizabeth Mann, Daniel J DeSalvo, Janine Sanchez, Carol Levy, Halis K Akturk, Todd Alonso, Osagie Ebekozen
- 5. Distribution of Continuous Glucose Monitoring (CGM) derived glycemic outcomes among real-time CGM vs. isCGM users in a large multi-center EMR database for people with T1D**
 1. Nudrat Noor, Osagie Ebekozen, Francesco Vendrame, Laura Jacobsen, Ruth S. Weinstock, Mary Pat Gallagher, Sarah Corathers, Siham Accacha, Priya Prahalad, Robert Rapaport
- 6. *Patient reported Severe Hypoglycemia among Hybrid Closed Loop System (HCLS) users: Real world evidence from a multi-center study for people with Type 1 Diabetes**
 1. Osagie Ebekozen, Nudrat Noor, Joyce Lee, Roberto Izquierdo, Lauren Golden, Brian Miyazaki, Meredith Wilkes, Mary L Scott, Allison Mekhoubad, Janine Sanchez

ADA 2023 Submitted Abstracts

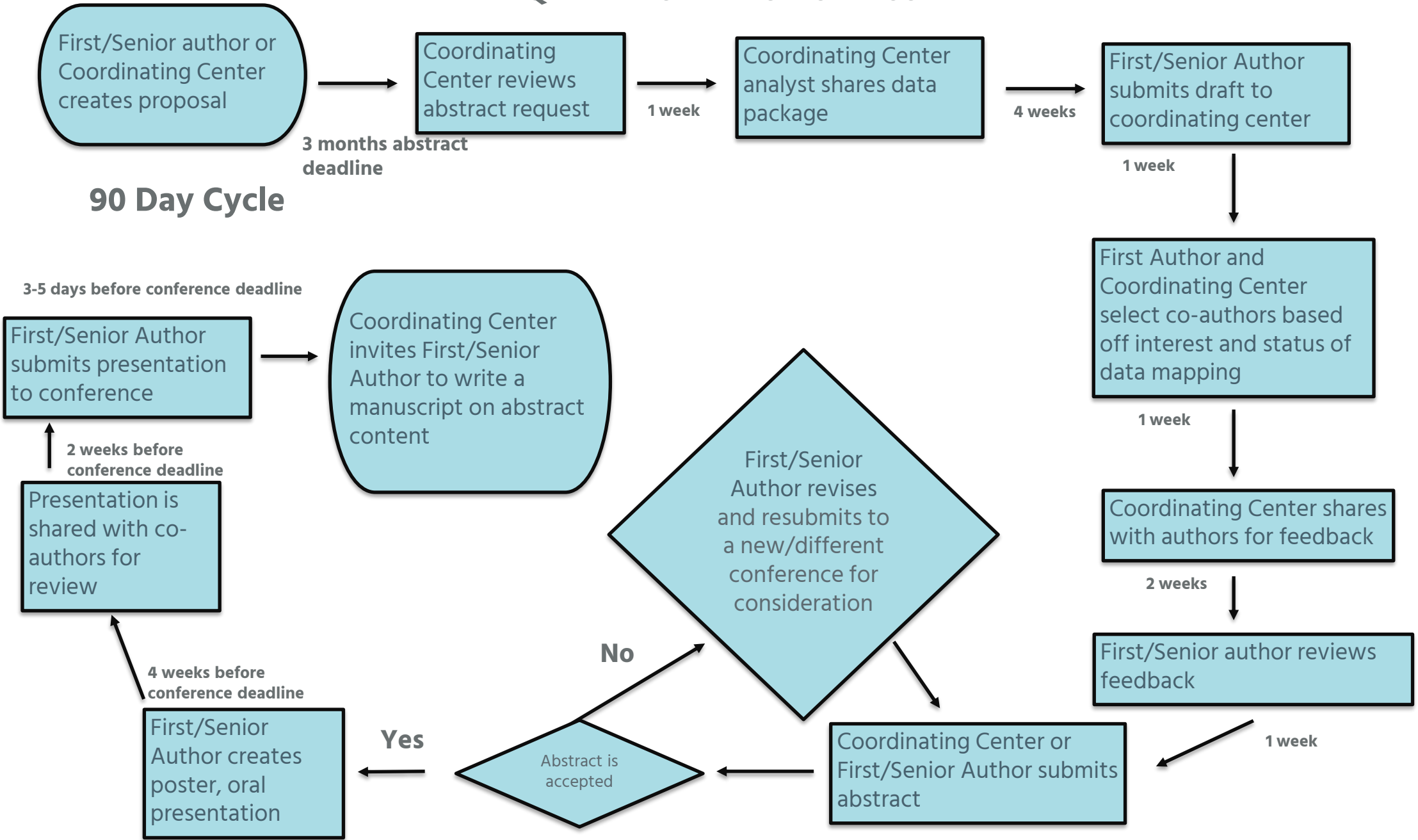
1. 2022 State of Type 1 Diabetes in the US: Real World T1D Exchange Multicenter Data from over 60,000 people
2. Qualitative Study: Provider Awareness and Attitudes towards Type 1 Antibody Screening
3. LGBTQ+ Supportive and Inclusive Care Practices in the T1D Exchange Quality Improvement Collaborative
4. Advancing Quality Improvement Culture among 27 Pediatric and Adult Care Centers
5. Walking the Talk: Improving Use of the T1D Exchange Quality Improvement Portal Using QI Methodology
6. Current Practices in Racial Equity: Findings from the T1D Exchange Quality Improvement Collaborative in 2022
7. Multicenter Quality Improvement Project: Increasing Social Determinants of Health (SDOH) Screening Across Six Diabetes Centers in the United States
8. Diabetes Provider Perceptions of Barriers and Benefits to Type 1 Diabetes Autoantibody Testing Among Patients and Relatives
9. Incorporating Shared Decision Making to improve adoption of Connected Insulin Pends
10. CGM Initiation within 6 months of T1D Diagnosis associated with lower HbA1c at 3 years
11. Maintaining engagement in a large quality improvement network while rapidly expanding: Lessons from the T1D Exchange Quality Improvement Collaborative
12. Food Insecurity in People with Type 1 Diabetes and Glycemic Outcomes
13. Reproductive Health counseling in the T1D Exchange Quality Improvement Collaborative
14. Health Care Transition Practices in the T1D Exchange Quality Improvement Collaborative



Endocrinology and Metabolism Clinics of North America Special Issue

Number	Proposed Title	First Author	First Author Affiliation	Senior Author	Senior Author Affiliation
1	Type 1 Diabetes Population Health Improvement	Holly Hardison, BS	T1D Exchange	Osagie Ebekeozien MD	T1D Exchange
2	Type 1 Diabetes Screening and Diagnosis	Patricia Gomez, MD	University of Miami	Janine Sanchez, MD	University of Miami
3	Young Adults with Type 1 Diabetes	Priyanka Mathias, MD	Albert Einstein College of Medicine	Shivani Agarwal, MD,MPH	Albert Einstein College of Medicine
4	Optimizing Glycemic Outcomes for Children with Type 1 Diabetes	Vickie Wu, MD	Icahn School of Medicine at Mt Sinai	Meredith Wilkes MD	Icahn School of Medicine at Mt Sinai
5	Transitions of Care from Pediatrics to Adults	Faisal Malik, MD, MSHS	Seattle Children's	Kathryn Weaver, MD	Seattle Children's Hospital
6	Optimizing Glycemic Targets for Adults with Type 1 Diabetes	Devin Steenkamp, MD	Boston Medical Center	Howard Wolpert, MD	Boston Medical Center
7	Access to Care for Type 1 Diabetes	Anna Cymbaluk, MD	Rady Children's Hospital	Carla Demeterco-Berggren, MD, PhD	Rady Children's Hospital
8	Emerging Technologies and Therapeutics	Halis K Akturk, MD	Barbara Davis Center	Alexis McKee, MD	Washington University at St Louis
9	Social Determinants of Health (SDOH) in Type 1 Diabetes	Nana Hawa Yayah-Jones, MD	Cincinnati Children's	Osagie Ebekeozien	T1D Exchange
10	Psychosocial care in T1D	Jill Weissberg-Benchell PhD	Lurie Children's	Cynthia Munoz, MD	CHLA
11	Acute and Chronic Adverse Outcomes of Type 1 Diabetes	Rachel Longendyke, MD	Children's National	Shideh Majidi, MD	Children's National Hospital
12	Type 1 Diabetes and Cardiovascular Health	Maria Pesantez, MD	University of Miami Miller School of Medicine	Francesco Vendrame, MD	University of Miami Miller School of Medicine
13	Patient/Parent Engagement in Type 1 Diabetes Research	Risa Wolf MD	Johns Hopkins University	Nicole Riales, MA	T1D Exchange

QI Abstract Publication Process



Committee Expectations

- Members are encouraged to be the main reviewer on 2 manuscripts in 2023
 - Selection for manuscript review is based on clinical interest
 - If you have not filled out the Clinical Interest form, please use this [link](#) or scan the QR code

