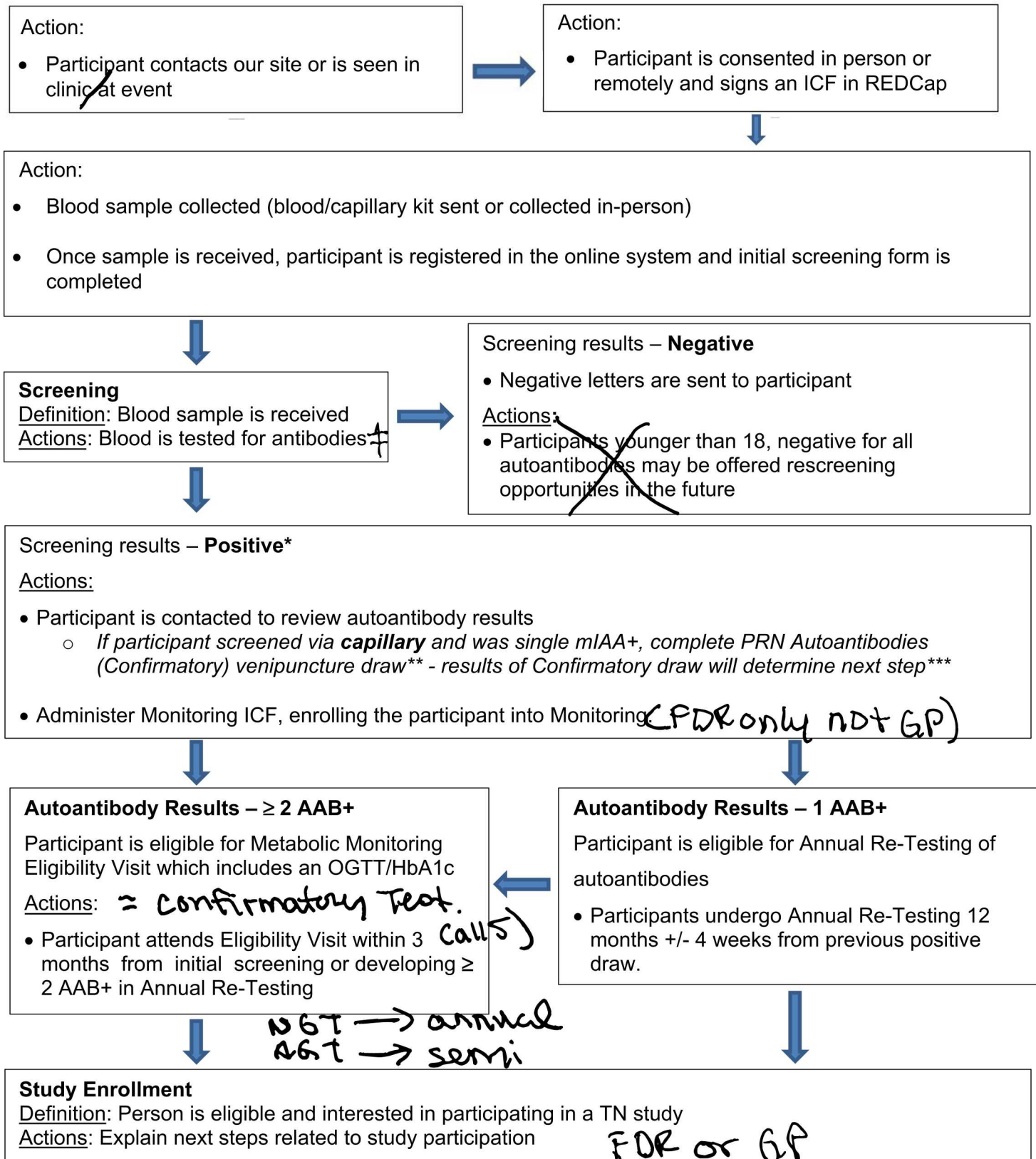


# TN01 – Pathway to Prevention Participation Process Map



\*General population participants are not eligible for ongoing monitoring (Annual Re-Testing or Metabolic Monitoring)

\*\*Capillary draws do not collect sufficient volume for ICA testing. If a participant has tested single autoantibody mIAA positive via a capillary kit, then the participant should be brought back in for a venipuncture draw to determine ICA status. Enter specimen in the PRN Autoantibodies (Confirmatory) Specimen Collection form in the Specimen Management System.

\*\*\*If a participant has a venipuncture confirmatory draw that is negative for all AAB, after initially screening positive via capillary draw, they are considered AAB+ and would rely on the initial screening results to determine their AAB+ status.

† GAD65A + mIAA 1st : IAZA ICA 2nd & 3rd

+	+	+	+	+
-	-	-	-	-
+	+	+	+	+
-	-	-	-	-